



PRI-TT-EC

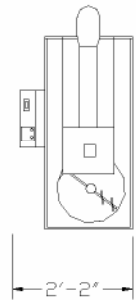
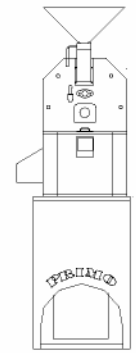
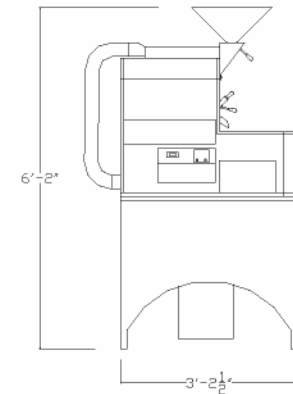
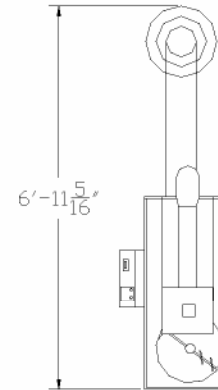
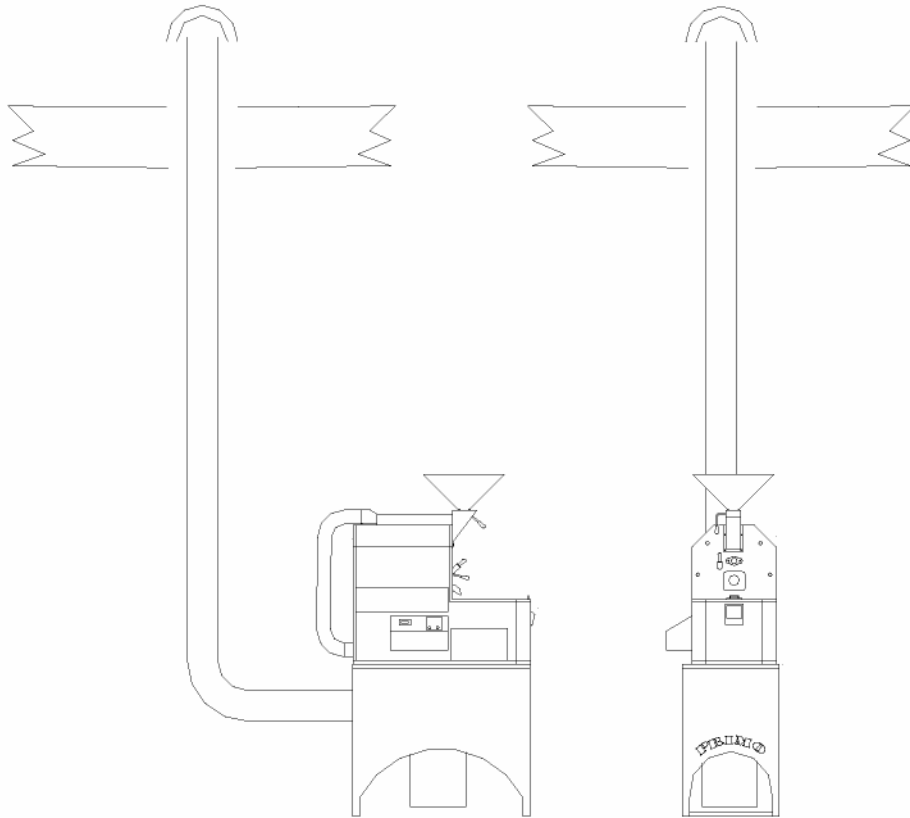
Warranty:
2 year parts -
Life time on workmanship



COLOR OPTIONS	
Red	
Royal Blue	
Hunter Green	
Black	
Canary Yellow	
Burgandy	

Technical Specifications		
Batch Capacity 6 LB Est. Loss 18%	Green 6.0 lbs.	Roasted. 5.0 lbs.
Roasted Capacity per hour total.		20 lbs.
Crated Shipping Weight.		700 lbs.
Dimensions	44" High x 29" Deep x 26" Wide	
Electrical	110 V = 5.0 Amps	220 V = 2.5 Amps
CFMS	Roasting = 160	Cooling = 160
Gas Supplied 3/4" inlet	Natural	Propane
Venting	Chaff Cooler Vent = 6 in	
<p align="center">Standard Features</p> <ul style="list-style-type: none"> ▪ Digital tempmeter ▪ Chaff Cyclone. ▪ Brushed stainless steel face plate. ▪ IR Burner 		

PRI-TT-EC Layout Sheet



PRI-T AND PRI-TT-EC

REV. 2 11/30/06

TOM OVERY

PRIMO ROASTING INC.
 1717 NEWPORT CIRCLE
 SANTA ANA, CA 92705
 1-714-556-5259